



MY TIMELINE



What Can I do in High School?

Take the **ACT** and **SAT**

Complete College Applications:
The Common Application
CFNC and
Individual applications.

Be aware of transcripts and
transfer credit such as: Early
College, AP, IB, CLEP or Transfer
Credit.

Participate
in extracurricular activities:
Sports, jobs, clubs,
organizations, volunteering.
Workshops, Summer camps

What Can I do in College?

Schools require you to have at least a Bachelor's
Degree to pursue a Master's in Public Health. You
can **transfer** from a NC community college to
public NC university and still get your MPH.

Picking a major does not effect your acceptance
into MPH programs as long as you have the
general course requirements.

Other opportunities to distinguish
your application include: Shadowing, volunteering,
clinical experiences, research.

What about Graduate School?

Master's of Public Health programs require you to
take the **GRE** exam before applying to school.

SOPHAS is the application service for Public
Health programs.

Applications open about one year before entering the
program. The application process includes: application
and in-person interviews

MPH programs are typically two years. There are four
schools with MPH programs in North Carolina:

UNC Chapel Hill
UNC Greensboro
East Carolina University
UNC Charlotte

There's also an MPH program in **Asheville**, as part of
UNC Chapel Hill!

PUBLIC HEALTH PROFESSIONALS...

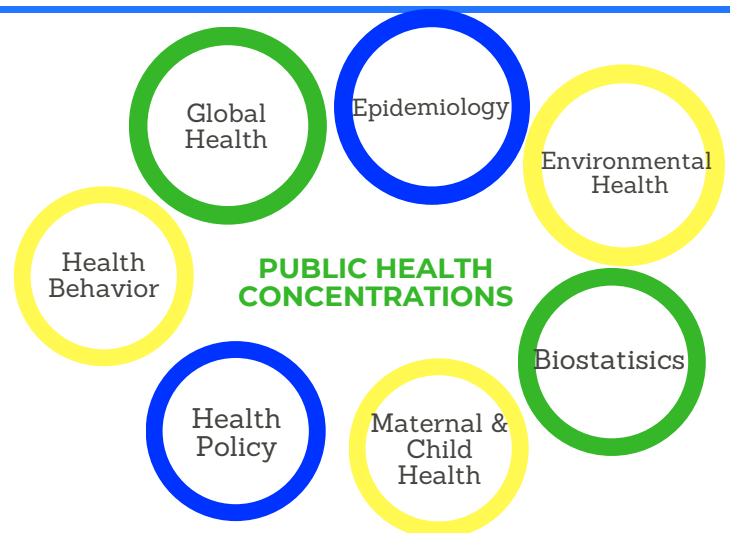
Advocate for patients in
the health care system

Can get a doctorate degree

Promote health and
wellness

Are needed in Western
North Carolina

Can be employed in health departments,
governmental settings, healthcare
offices, and non-profit organizations.



MORE INFORMATION?

[Highest Paid Public Health Jobs](#)
[SOPHAS Fee Assistance](#)
[Pre-Public Health Student Resources](#)
[Learn How to Become—Public Health](#)